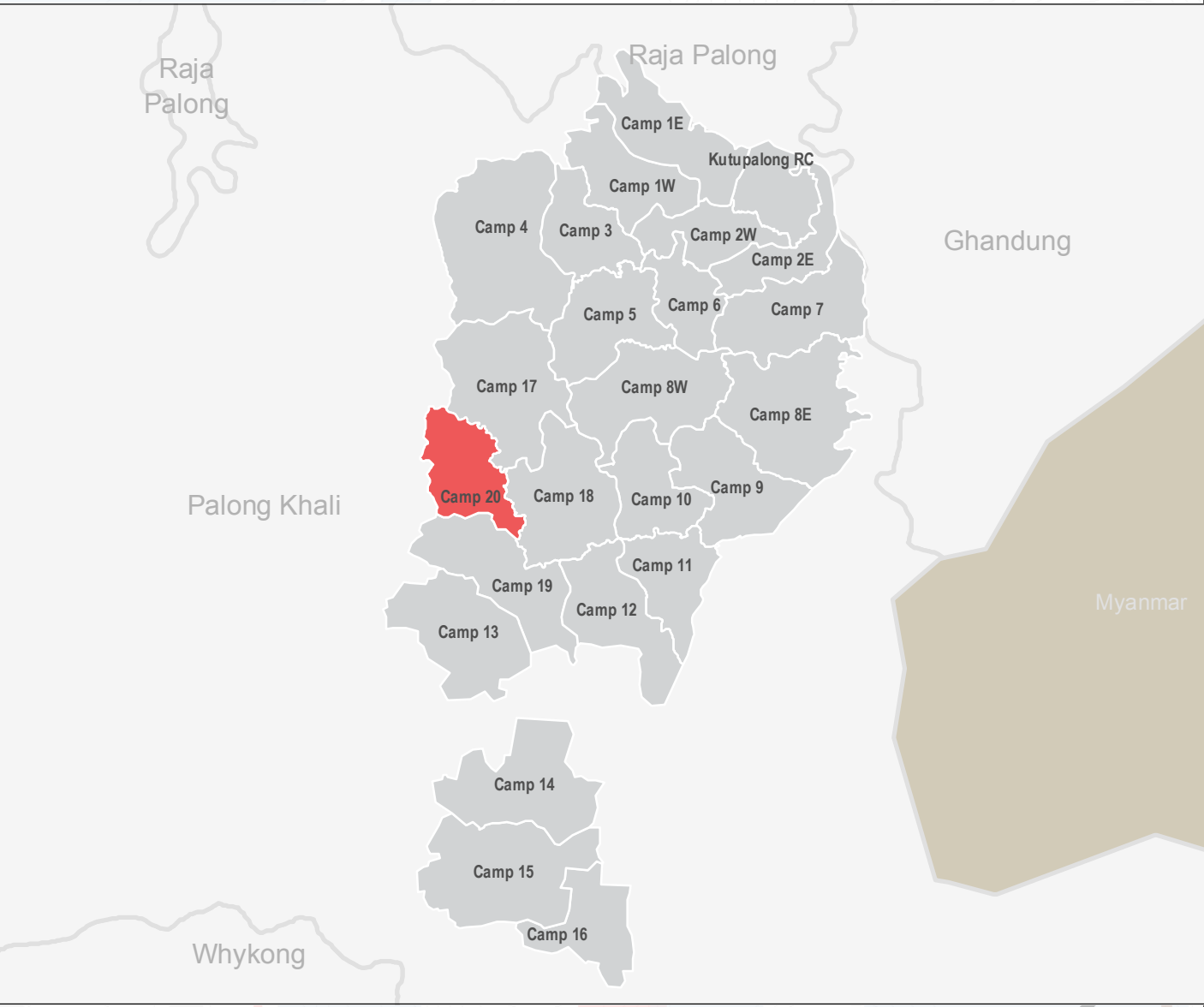
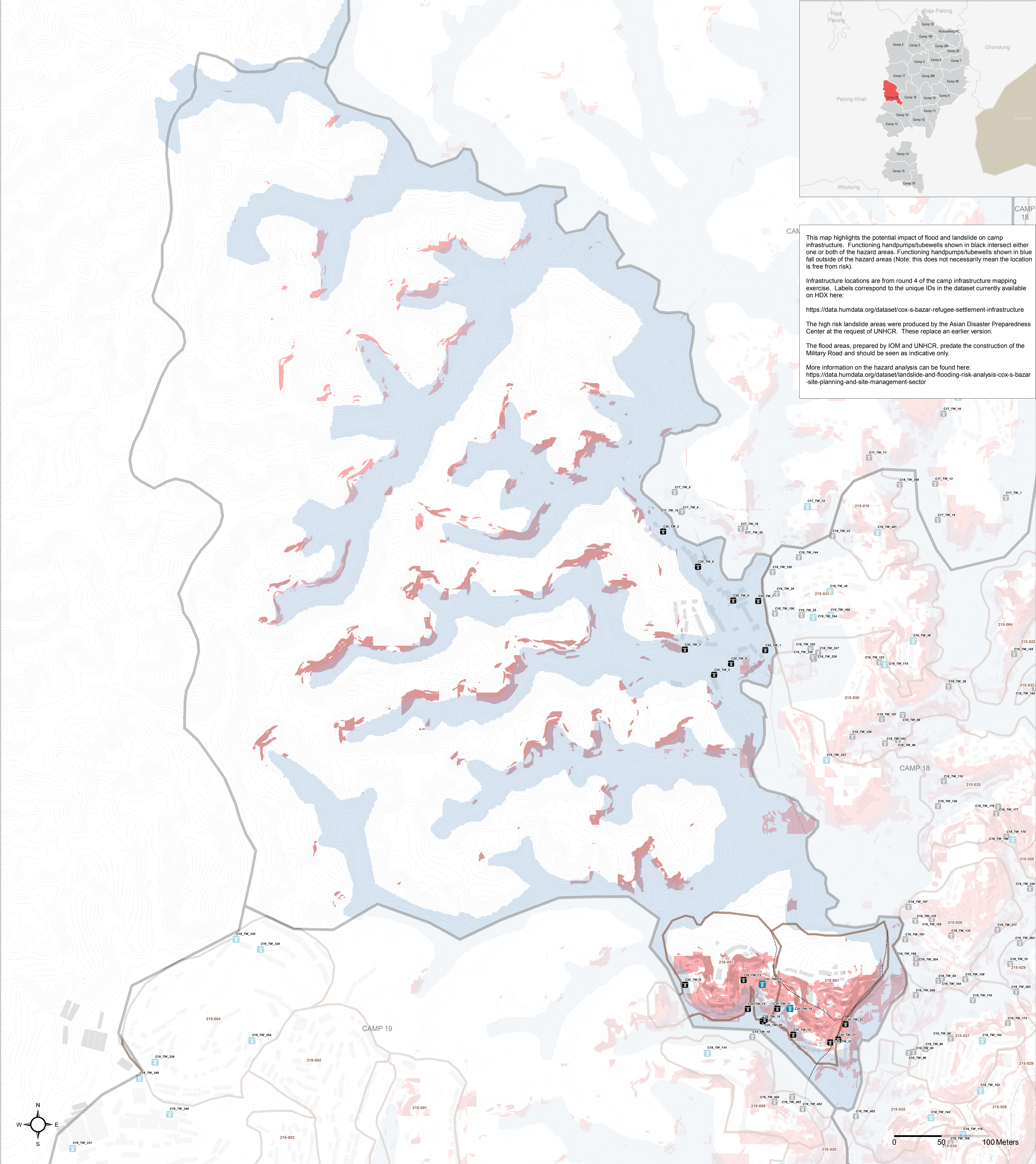


BANGLADESH - Rohingya Refugee Crisis - Cox's Bazar District

Camp 20 - Potential Risk to Handpumps and Tubewells

For Humanitarian Purposes Only
Production date: 19 March 2018



This map highlights the potential impact of flood and landslide on camp infrastructure. Functioning handpumps/tubewells shown in black intersect either one or both of the hazard areas. Functioning handpumps/tubewells shown in blue fall outside of the hazard areas (Note: this does not necessarily mean the location is free from risk).

Infrastructure locations are from round 4 of the camp infrastructure mapping exercise. Labels correspond to the unique IDs in the dataset currently available on HDX here:

<https://data.humdata.org/dataset/cox-s-bazar-refugee-settlement-infrastructure>

The high risk landslide areas were produced by the Asian Disaster Preparedness Center at the request of UNHCR. These replace an earlier version.

The flood areas, prepared by IOM and UNHCR, predate the construction of the Military Road and should be seen as indicative only.

More information on the hazard analysis can be found here:
<https://data.humdata.org/dataset/landslide-and-flooding-risk-analysis-cox-s-bazar-site-planning-and-site-management-sector>



- Handpumps / Tubewells**
- Functioning Handpump / Tubewell Not Within Hazard Area
 - Functioning Handpump / Tubewell Within Hazard Area
- High Risk Landslide Areas**
- Unstable / Critical Unstable
 - Nearly Unstable / Relatively Unstable
 - Flood Area
 - Elevation Contours (1m)
- Other Features**
- Camp Boundaries
 - Majhee Blocks
 - Shelter Footprints
 - Highway
 - Military Road / Vehicle Road
 - Main Path
 - Footpath

Data Sources:
Camp Infrastructure - REACH
Landslide Risk - ADPC / UNHCR
Flood Areas - ADPC / UNHCR / IOM
Elevation Contours - IOM
Shelter Footprints - REACH / UNOSAT
Roads / Footpaths - ISCG / REACH
Camp / Majhee / Admin Boundaries - ISCG / IOM / OCHA

Coordinate System: WGS 1984 UTM Zone 46N
Projection: Transverse Mercator
Contact: reach.mapping@impact-initiatives.org

Note: Data, designations and boundaries contained on this map are not warranted to be error-free and do not imply acceptance by the REACH partners, associates, donors mentioned on this map.

In support of the

WASH Sector
Cox's Bazar

Funded by

unicef

In partnership with

UNOSAT
United Nations Satellite Applications Programme