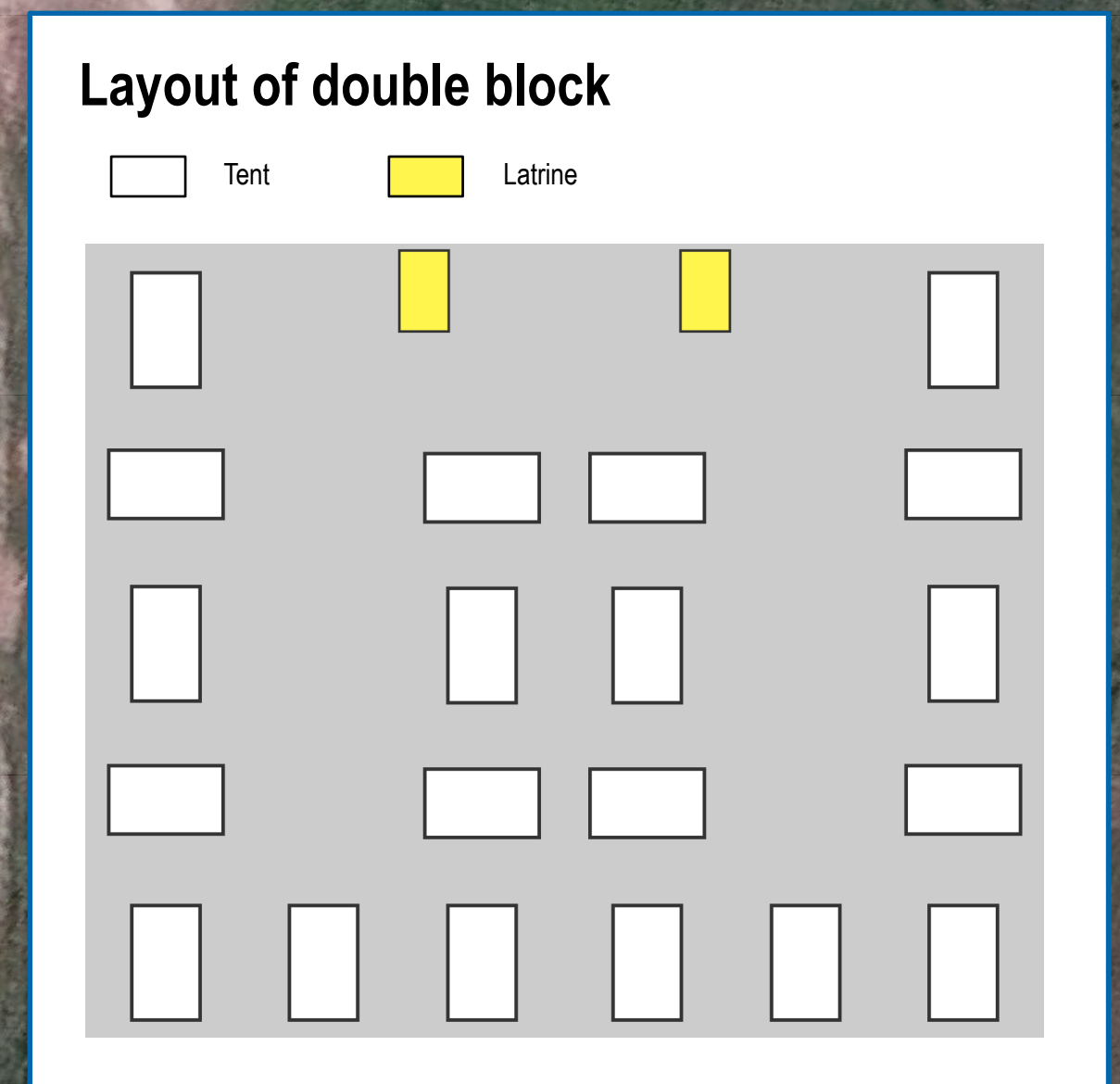
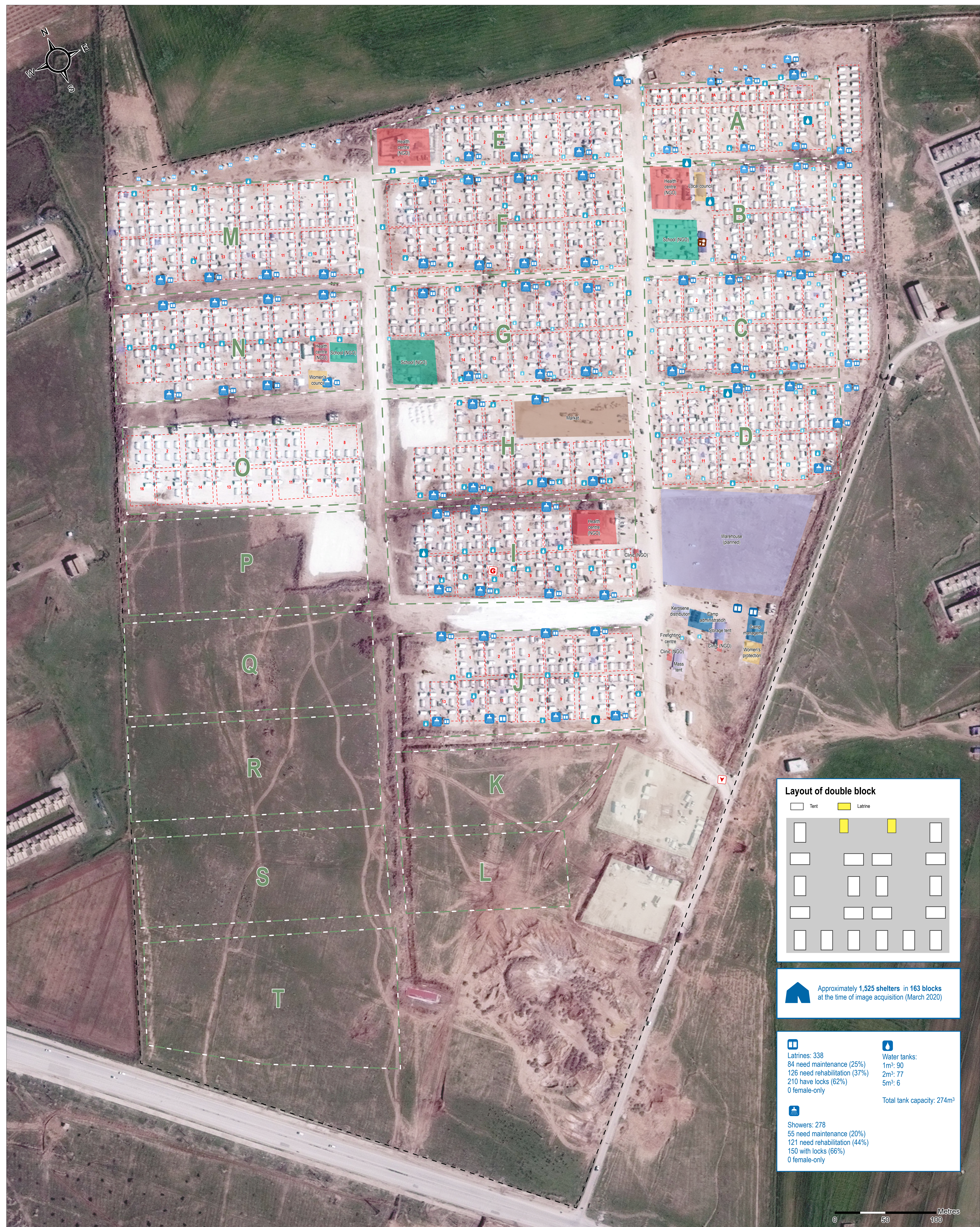


# SYRIA - Washokani IDP Camp

## General Infrastructure - As of March 2020

For Humanitarian Purposes Only  
Production date : 25 March 2020



Approximately 1,525 shelters in 163 blocks at the time of image acquisition (March 2020)

<p><b>Latrines:</b> 338 84 need maintenance (25%) 126 need rehabilitation (37%) 210 have locks (62%) 0 female-only</p>	<p><b>Water tanks:</b> 1m<sup>3</sup>: 90 2m<sup>3</sup>: 77 5m<sup>3</sup>: 6  Total tank capacity: 274m<sup>3</sup></p>
<p><b>Showers:</b> 278 55 need maintenance (20%) 121 need rehabilitation (44%) 150 with locks (66%) 0 female-only</p>	

- General infrastructure**
- Block
  - Entrance
  - Camp management / Authorities
  - Market
  - Sector
  - Generator
  - Community
  - School
  - Boundary
  - Kitchen
  - Distribution
  - Service
  - Health
  - Storage

- Sanitation infrastructure**
- Water tank capacity**
- 1 m<sup>3</sup>
  - 2 m<sup>3</sup>
  - 5 m<sup>3</sup>
- Latrine**
- 1 latrine
  - 2-4 latrines
  - 5-7 latrines
  - 8+ latrines

Contact: [mena.reach@impact-initiatives.org](mailto:mena.reach@impact-initiatives.org)  
Projection : WGS 1984 UTM 37N  
Data Sources:  
Infrastructure: REACH  
Satellite Imagery: WorldView-2 from 9 March 2020  
Copyright: © 2020 DigitalGlobe  
Source: US Department of State, Humanitarian Information Unit,  
NextView license  
File name: REACH\_SYR\_Map\_Washokani\_Camp\_March2020

Note: Data, designations and boundaries contained on this map are not warranted to be error-free and do not imply acceptance by the REACH partners, associated, donors mentioned on this map.