

Introduction

While an estimated 2.1 million people live in displacement sites in Somalia¹, existing information on exact locations and site level vulnerabilities is sparse, and existing assessments have been ad-hoc and unharmonised, resulting in low comparability and verification.

The Detailed Site Assessment (DSA) was triggered in coordination with the Camp Coordination and Camp Management (CCCM) Cluster in order to provide the humanitarian community with up-to-date information on location of internally displaced persons (IDP) sites, the conditions and capacity of the sites and the humanitarian needs of the residents.

Target locations for assessment were selected based on needs identified by the CCCM Cluster

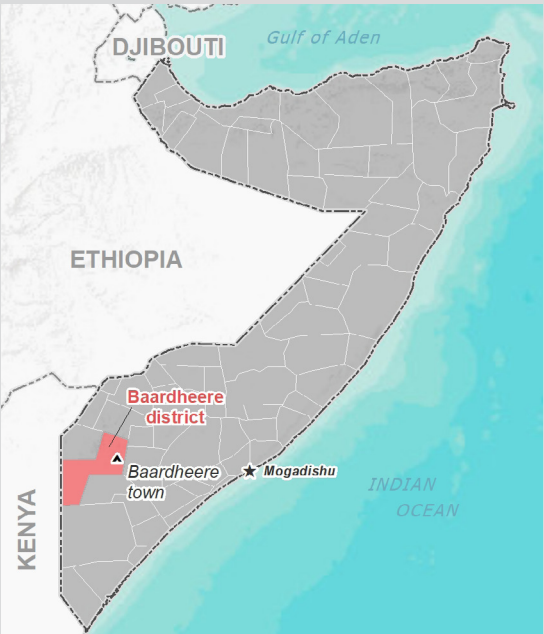
and accessibility for data collection.

A grid pattern approach² was applied during data collection to ensure that all IDP sites in the target area were identified. In each site, two key informant (KI) interviews were conducted: one with the site manager or community leader and one with a women's representative to ensure the perspectives of different groups were captured³. KI responses were aggregated to give one response per question per site.

This factsheet presents a summary of Kurmaan Site profile along with the needs and priorities of IDPs residing in the site. As the data is captured through KIs, findings should be considered indicative only.

Date assessed: **Oct - 2017**

Location map



Assessed IDP sites in Baardheere

Coordinates: Lat. 2.33, Long. 42.29



1.United Nations High Commissioner for Refugees (UNHCR): Protection & Return Monitoring Network (PRMN), September 2017

2.For each target location, the area was divided into 1km² grids. Enumerator teams then visited each grid to verify whether an IDP site was present. By visiting all grids, teams were able to determine the total number of sites in each location.

3.Where KI responses were significantly divergent, these were verified with the respective KIs with a higher reliability accorded to the response provided by the site manager or community leader.



Site Information

Settlement type	Spontaneous site
Estimated number of individuals	1,420
Estimated number of households	245
Site capacity reached	Yes
Responsible management agency	No management
Date when most site residents arrived	Jun-11
Site owner	Not known



Protection

Number of vulnerable households:	
Female-headed households	25
Child-headed households	0
Elderly individuals ⁴	96
Unaccompanied children	8
Individuals with a physical disability	15
Presence of shared community space	No
Presence of separate space for women/girls	No
Presence of child friendly space	No
Public lighting in the site	No
Type of landownership	N/A
Risk of eviction in next three months	No



WASH

Access to potable water	No
Number of latrines in the site:	
Latrines (mixed)	15
Latrines (male)	8
Latrines (female)	4
Access to handwashing facilities	No



Shelter and Non-Food Items (NFIs)

Most common shelter types in the site⁵:	
1. Buul	
2. Tent	
3. Timber and plastic sheet	
Electricity available in the site	No
Access to a NFI market	Yes
Average walking time to the nearest NFI market	15 minutes
Perceived safe access to NFI market	Yes



Displacement

Estimated number of households per displacement group:	
IDPs	239
Host community/ non-displaced	6
IDP households arrived in the past 3 months	68
Most common areas of origin:	
First area of origin	Gedo
Second area of origin	Bay
Third area of origin	Middle Juba



Food Security

Primary source of food	Food assistance
Food distributions	Less than montly
Access to a food market	Yes



Health and Nutrition

Most common health issue(s) reported in the site:	
1. AWD / Cholera	
2. Malaria	
3. N/A	
Access to healthcare services	Yes
Average walking time to the nearest health service	15 minutes
Women give birth in the site	Yes
Access to nutrition services	No
Average walking time to the nearest nutrition service	N/A
Access to nutrition services:	No



Education

Education services available	Yes
Average walking time to the nearest school	10 minutes
Education facilities available to residents in the site⁵:	
1. Quranic	
2. N/A	
3. N/A	



Communication

Three most trusted sources of information⁵:	
1. Friends, neighbours and family	
2. Radio	
3. N/A	
Most commonly spoken language	Somali Standard

4.More than 60 years old.

5.Key informants could select multiple responses.

Introduction

While an estimated 2.1 million people live in displacement sites in Somalia¹, existing information on exact locations and site level vulnerabilities is sparse, and existing assessments have been ad-hoc and unharmonised, resulting in low comparability and verification.

The Detailed Site Assessment (DSA) was triggered in coordination with the Camp Coordination and Camp Management (CCCM) Cluster in order to provide the humanitarian community with up-to-date information on location of internally displaced persons (IDP) sites, the conditions and capacity of the sites and the humanitarian needs of the residents.

Target locations for assessment were selected based on needs identified by the CCCM Cluster

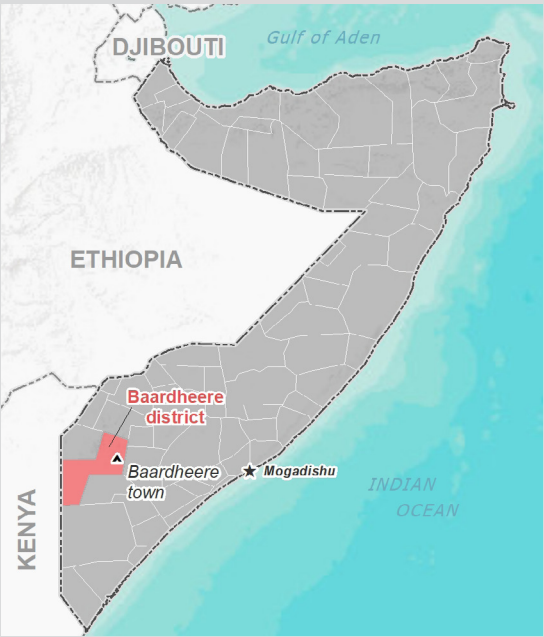
and accessibility for data collection.

A grid pattern approach² was applied during data collection to ensure that all IDP sites in the target area were identified. In each site, two key informant (KI) interviews were conducted: one with the site manager or community leader and one with a women's representative to ensure the perspectives of different groups were captured³. KI responses were aggregated to give one response per question per site.

This factsheet presents a summary of Kaskey Site profile along with the needs and priorities of IDPs residing in the site. As the data is captured through KIs, findings should be considered indicative only.

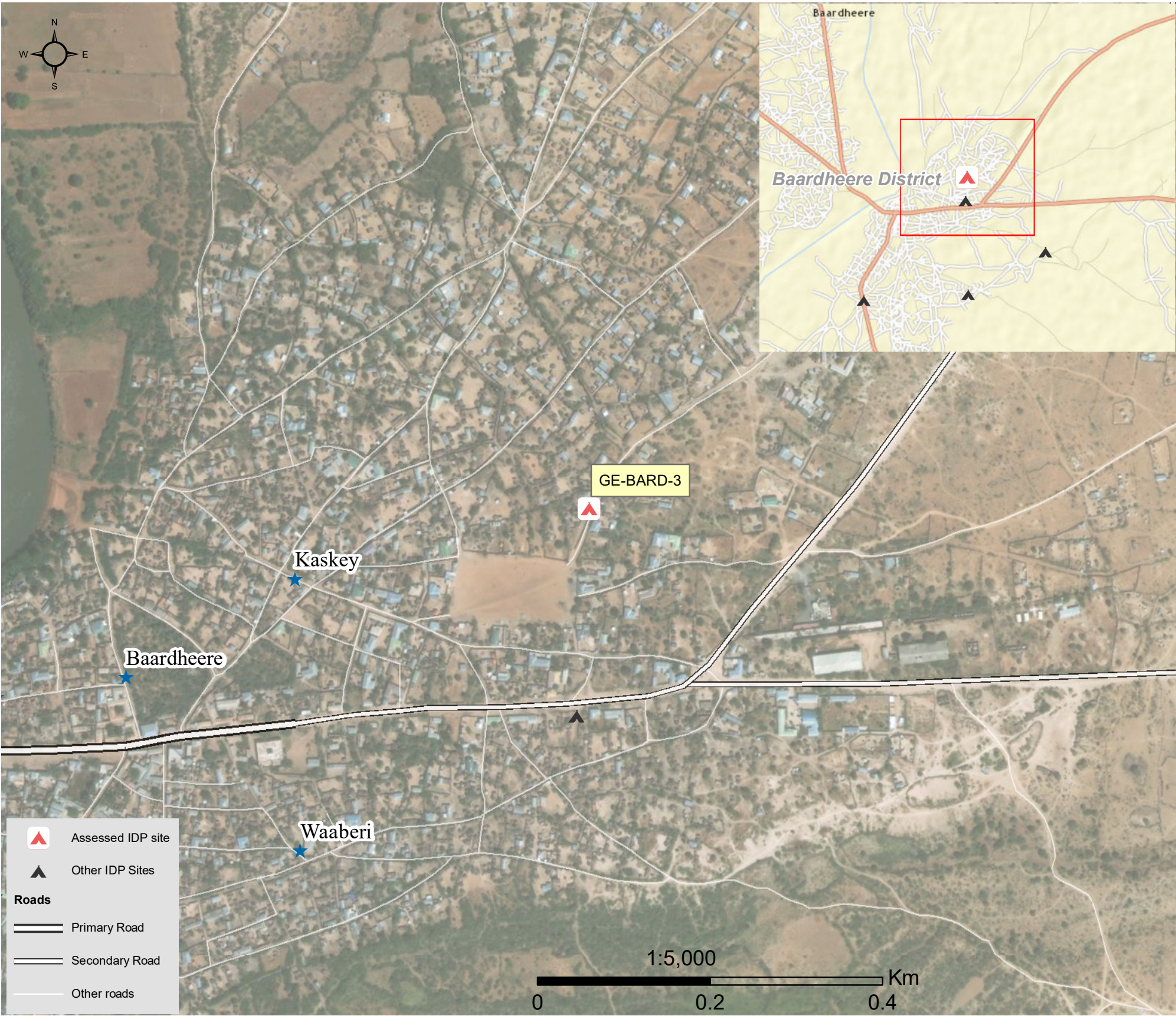
Date assessed: **Oct - 2017**

Location map



Assessed IDP sites in Baardheere

Coordinates: Lat. 2.341, Long. 42.29



1.United Nations High Commissioner for Refugees (UNHCR): Protection & Return Monitoring Network (PRMN), September 2017

2.For each target location, the area was divided into 1km² grids. Enumerator teams then visited each grid to verify whether an IDP site was present. By visiting all grids, teams were able to determine the total number of sites in each location.

3.Where KI responses were significantly divergent, these were verified with the respective KIs with a higher reliability accorded to the response provided by the site manager or community leader.



Site Information

Settlement type	Spontaneous site
Estimated number of individuals	930
Estimated number of households	155
Site capacity reached	Yes
Responsible management agency	No management
Date when most site residents arrived	Apr-16
Site owner	None



Protection

Number of vulnerable households:	
Female-headed households	25
Child-headed households	0
Elderly individuals ⁴	63
Unaccompanied children	20
Individuals with a physical disability	135
Presence of shared community space	No
Presence of separate space for women/girls	No
Presence of child friendly space	No
Public lighting in the site	No
Type of landownership	N/A
Risk of eviction in next three months	No



WASH

Access to potable water	Yes
Number of latrines in the site:	
Latrines (mixed)	20
Latrines (male)	10
Latrines (female)	6
Access to handwashing facilities	No



Shelter and Non-Food Items (NFI)

Most common shelter types in the site⁵:	
1. Buul	
2. Tent	
3. Timber and plastic sheet	
Electricity available in the site	No
Access to a NFI market	Yes
Average walking time to the nearest NFI market	15 minutes
Perceived safe access to NFI market	Yes



Displacement

Estimated number of households per displacement group:	
IDPs	149
Host community/ non-displaced	6
IDP households arrived in the past 3 months	34
Most common areas of origin:	
First area of origin	Bay
Second area of origin	Gedo
Third area of origin	Middle Juba



Food Security

Primary source of food	Food assistance
Food distributions	Less than montly
Access to a food market	Yes



Health and Nutrition

Most common health issue(s) reported in the site:	
1. AWD / Cholera	
2. Malaria	
3. N/A	
Access to healthcare services	No
Average walking time to the nearest health service	N/A
Women give birth in the site	No
Access to nutrition services	No
Average walking time to the nearest nutrition service	N/A
Access to nutrition services:	No



Education

Education services available	Yes
Average walking time to the nearest school	15 minutes
Education facilities available to residents in the site⁵:	
1. Quranic	
2. N/A	
3. N/A	



Communication

Three most trusted sources of information⁵:	
1. Friends, neighbours and family	
2. Radio	
3. N/A	
Most commonly spoken language	Somali Maay

4.More than 60 years old.
5.Key informants could select multiple responses.



Introduction

While an estimated 2.1 million people live in displacement sites in Somalia¹, existing information on exact locations and site level vulnerabilities is sparse, and existing assessments have been ad-hoc and unharmonised, resulting in low comparability and verification.

The Detailed Site Assessment (DSA) was triggered in coordination with the Camp Coordination and Camp Management (CCCM) Cluster in order to provide the humanitarian community with up-to-date information on location of internally displaced persons (IDP) sites, the conditions and capacity of the sites and the humanitarian needs of the residents.

Target locations for assessment were selected based on needs identified by the CCCM Cluster

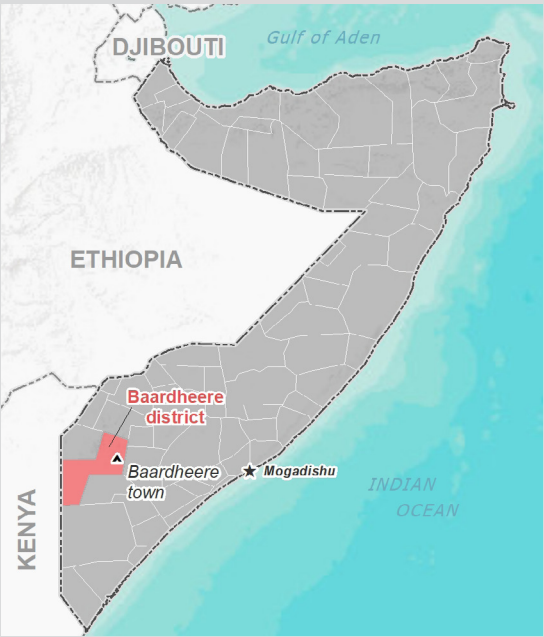
and accessibility for data collection.

A grid pattern approach² was applied during data collection to ensure that all IDP sites in the target area were identified. In each site, two key informant (KI) interviews were conducted: one with the site manager or community leader and one with a women's representative to ensure the perspectives of different groups were captured³. KI responses were aggregated to give one response per question per site.

This factsheet presents a summary of Buulogediyo Site profile along with the needs and priorities of IDPs residing in the site. As the data is captured through KIs, findings should be considered indicative only.

Date assessed: **Oct - 2017**

Location map



Assessed IDP sites in Baardheere

Coordinates: Lat. 2.33, Long. 42.281



1.United Nations High Commissioner for Refugees (UNHCR): Protection & Return Monitoring Network (PRMN), September 2017

2.For each target location, the area was divided into 1km² grids. Enumerator teams then visited each grid to verify whether an IDP site was present. By visiting all grids, teams were able to determine the total number of sites in each location.

3.Where KI responses were significantly divergent, these were verified with the respective KIs with a higher reliability accorded to the response provided by the site manager or community leader.



Site Information

Settlement type	Spontaneous site
Estimated number of individuals	1,110
Estimated number of households	185
Site capacity reached	Yes
Responsible management agency	Local authority
Date when most site residents arrived	Feb-17
Site owner	None



Protection

Number of vulnerable households:	
Female-headed households	18
Child-headed households	0
Elderly individuals ⁴	47
Unaccompanied children	12
Individuals with a physical disability	45
Presence of shared community space	No
Presence of separate space for women/girls	No
Presence of child friendly space	No
Public lighting in the site	No
Type of landownership	N/A
Risk of eviction in next three months	No



WASH

Access to potable water	Yes
Number of latrines in the site:	
Latrines (mixed)	19
Latrines (male)	12
Latrines (female)	3
Access to handwashing facilities	No



Shelter and Non-Food Items (NFI)

Most common shelter types in the site⁵:	
1. Buul	
2. Tent	
3. CGI	
Electricity available in the site	No
Access to a NFI market	Yes
Average walking time to the nearest NFI market	15 minutes
Perceived safe access to NFI market	Yes



Displacement

Estimated number of households per displacement group:	
IDPs	158
Host community/ non-displaced	27
IDP households arrived in the past 3 months	77
Most common areas of origin:	
First area of origin	Bay
Second area of origin	Middle Juba
Third area of origin	Lower Juba



Food Security

Primary source of food	Market purchase
Food distributions	Less than montly
Access to a food market	Yes



Health and Nutrition

Most common health issue(s) reported in the site:	
1. Malaria	
2. Polio	
3. Diphtheria	
Access to healthcare services	Yes
Average walking time to the nearest health service	15 minutes
Women give birth in the site	Yes
Access to nutrition services	No
Average walking time to the nearest nutrition service	N/A
Access to nutrition services:	No



Education

Education services available	No
Average walking time to the nearest school	N/A
Education facilities available to residents in the site⁵:	
1. N/A	
2. N/A	
3. N/A	



Communication

Three most trusted sources of information⁵:	
1. Friends, neighbours and family	
2. N/A	
3. N/A	
Most commonly spoken language	Somali Standard

4.More than 60 years old.

5.Key informants could select multiple responses.



Introduction

While an estimated 2.1 million people live in displacement sites in Somalia¹, existing information on exact locations and site level vulnerabilities is sparse, and existing assessments have been ad-hoc and unharmonised, resulting in low comparability and verification.

The Detailed Site Assessment (DSA) was triggered in coordination with the Camp Coordination and Camp Management (CCCM) Cluster in order to provide the humanitarian community with up-to-date information on location of internally displaced persons (IDP) sites, the conditions and capacity of the sites and the humanitarian needs of the residents.

Target locations for assessment were selected based on needs identified by the CCCM Cluster

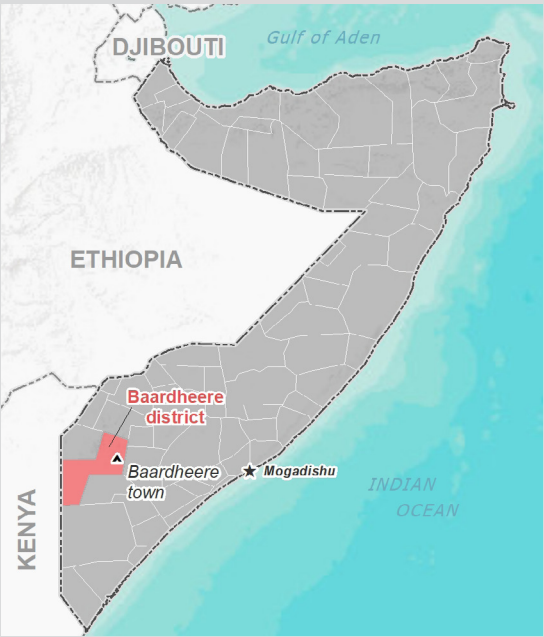
and accessibility for data collection.

A grid pattern approach² was applied during data collection to ensure that all IDP sites in the target area were identified. In each site, two key informant (KI) interviews were conducted: one with the site manager or community leader and one with a women's representative to ensure the perspectives of different groups were captured³. KI responses were aggregated to give one response per question per site.

This factsheet presents a summary of Kuloow Site profile along with the needs and priorities of IDPs residing in the site. As the data is captured through KIs, findings should be considered indicative only.

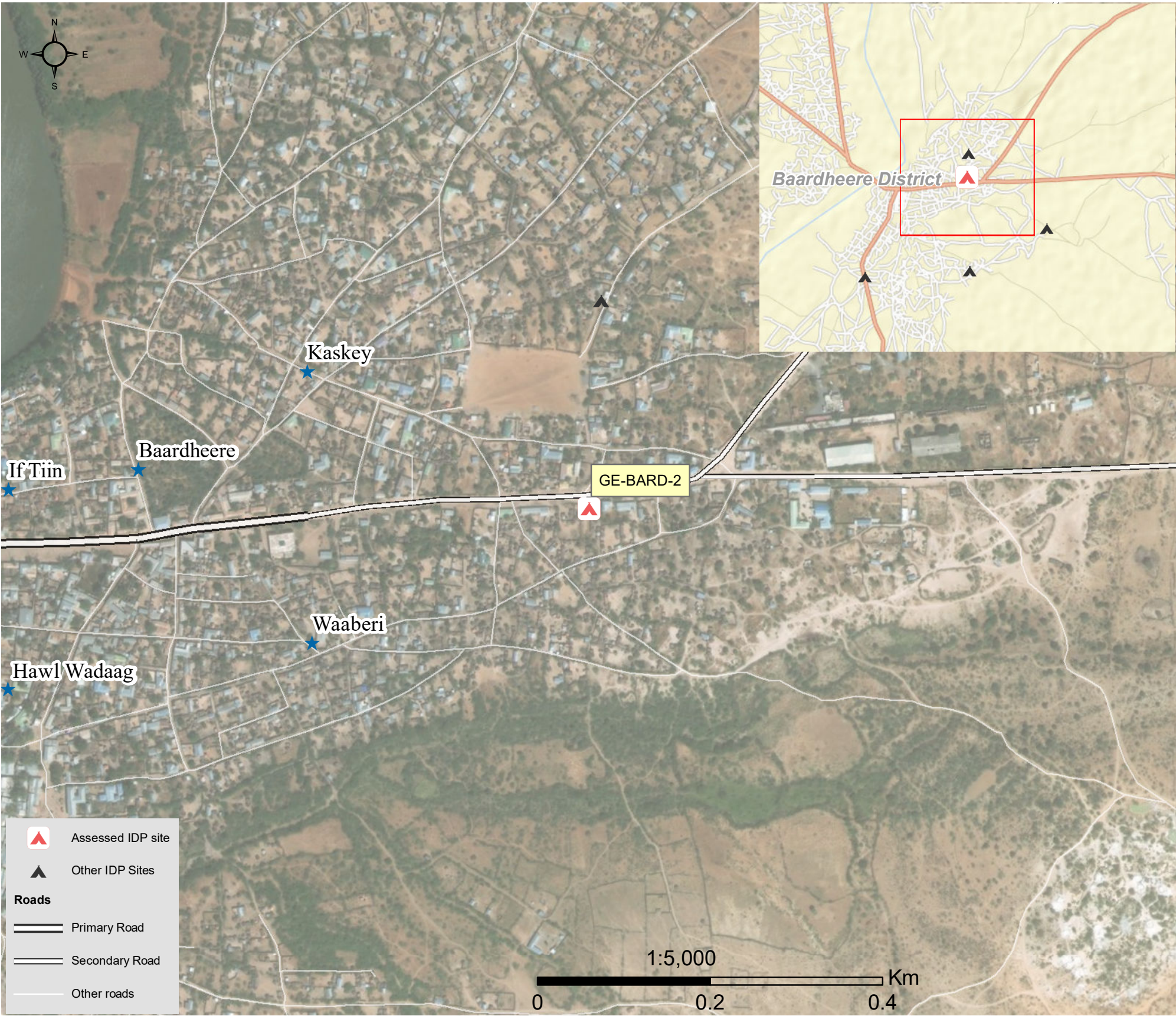
Date assessed: **Oct - 2017**

Location map



Assessed IDP sites in Baardheere

Coordinates: Lat. 2.339, Long. 42.29



1.United Nations High Commissioner for Refugees (UNHCR): Protection & Return Monitoring Network (PRMN), September 2017

2.For each target location, the area was divided into 1km² grids. Enumerator teams then visited each grid to verify whether an IDP site was present. By visiting all grids, teams were able to determine the total number of sites in each location.

3.Where KI responses were significantly divergent, these were verified with the respective KIs with a higher reliability accorded to the response provided by the site manager or community leader.



Site Information

Settlement type	Planned site
Estimated number of individuals	1,068
Estimated number of households	178
Site capacity reached	Yes
Responsible management agency	No management
Date when most site residents arrived	Jul-16
Site owner	None



Protection

Number of vulnerable households:	
Female-headed households	11
Child-headed households	0
Elderly individuals ⁴	148
Unaccompanied children	25
Individuals with a physical disability	32
Presence of shared community space	No
Presence of separate space for women/girls	No
Presence of child friendly space	No
Public lighting in the site	No
Type of landownership	N/A
Risk of eviction in next three months	No



WASH

Access to potable water	Yes
Number of latrines in the site:	
Latrines (mixed)	0
Latrines (male)	0
Latrines (female)	0
Access to handwashing facilities	N/A



Shelter and Non-Food Items (NFI)

Most common shelter types in the site⁵:	
1. Buul	
2. Tent	
3. CGI	
Electricity available in the site	No
Access to a NFI market	Yes
Average walking time to the nearest NFI market	16 minutes
Perceived safe access to NFI market	Yes



Displacement

Estimated number of households per displacement group:	
IDPs	174
Host community/ non-displaced	4
IDP households arrived in the past 3 months	55
Most common areas of origin:	
First area of origin	Bay
Second area of origin	Middle Juba
Third area of origin	Bakool



Food Security

Primary source of food	Borrow food/money
Food distributions	None
Access to a food market	Yes



Health and Nutrition

Most common health issue(s) reported in the site:	
1. Malaria	
2. Polio	
3. Diphtheria	
Access to healthcare services	No
Average walking time to the nearest health service	N/A
Women give birth in the site	Yes
Access to nutrition services	No
Average walking time to the nearest nutrition service	N/A
Access to nutrition services:	No



Education

Education services available	No
Average walking time to the nearest school	N/A
Education facilities available to residents in the site⁵:	
1. N/A	
2. N/A	
3. N/A	



Communication

Three most trusted sources of information⁵:	
1. Friends, neighbours and family	
2. N/A	
3. N/A	
Most commonly spoken language	Somali Standard

4. More than 60 years old.

5. Key informants could select multiple responses.

Introduction

While an estimated 2.1 million people live in displacement sites in Somalia¹, existing information on exact locations and site level vulnerabilities is sparse, and existing assessments have been ad-hoc and unharmonised, resulting in low comparability and verification.

The Detailed Site Assessment (DSA) was triggered in coordination with the Camp Coordination and Camp Management (CCCM) Cluster in order to provide the humanitarian community with up-to-date information on location of internally displaced persons (IDP) sites, the conditions and capacity of the sites and the humanitarian needs of the residents.

Target locations for assessment were selected based on needs identified by the CCCM Cluster

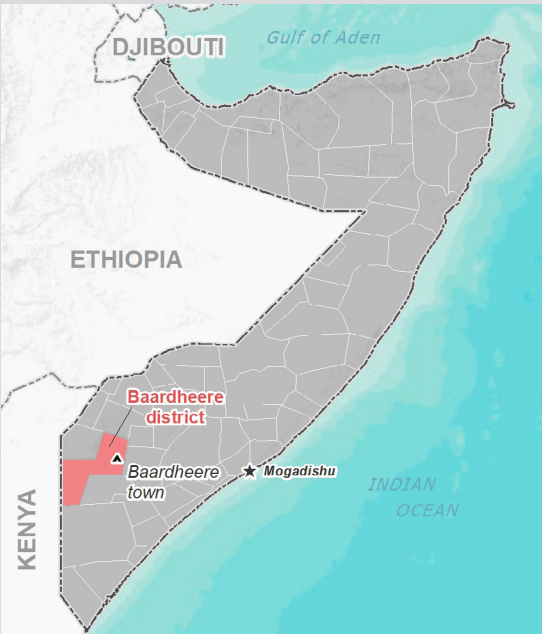
and accessibility for data collection.

A grid pattern approach² was applied during data collection to ensure that all IDP sites in the target area were identified. In each site, two key informant (KI) interviews were conducted: one with the site manager or community leader and one with a women's representative to ensure the perspectives of different groups were captured³. KI responses were aggregated to give one response per question per site.

This factsheet presents a summary of Camp Xabaal Cadeey Site profile along with the needs and priorities of IDPs residing in the site. As the data is captured through KIs, findings should be considered indicative only.

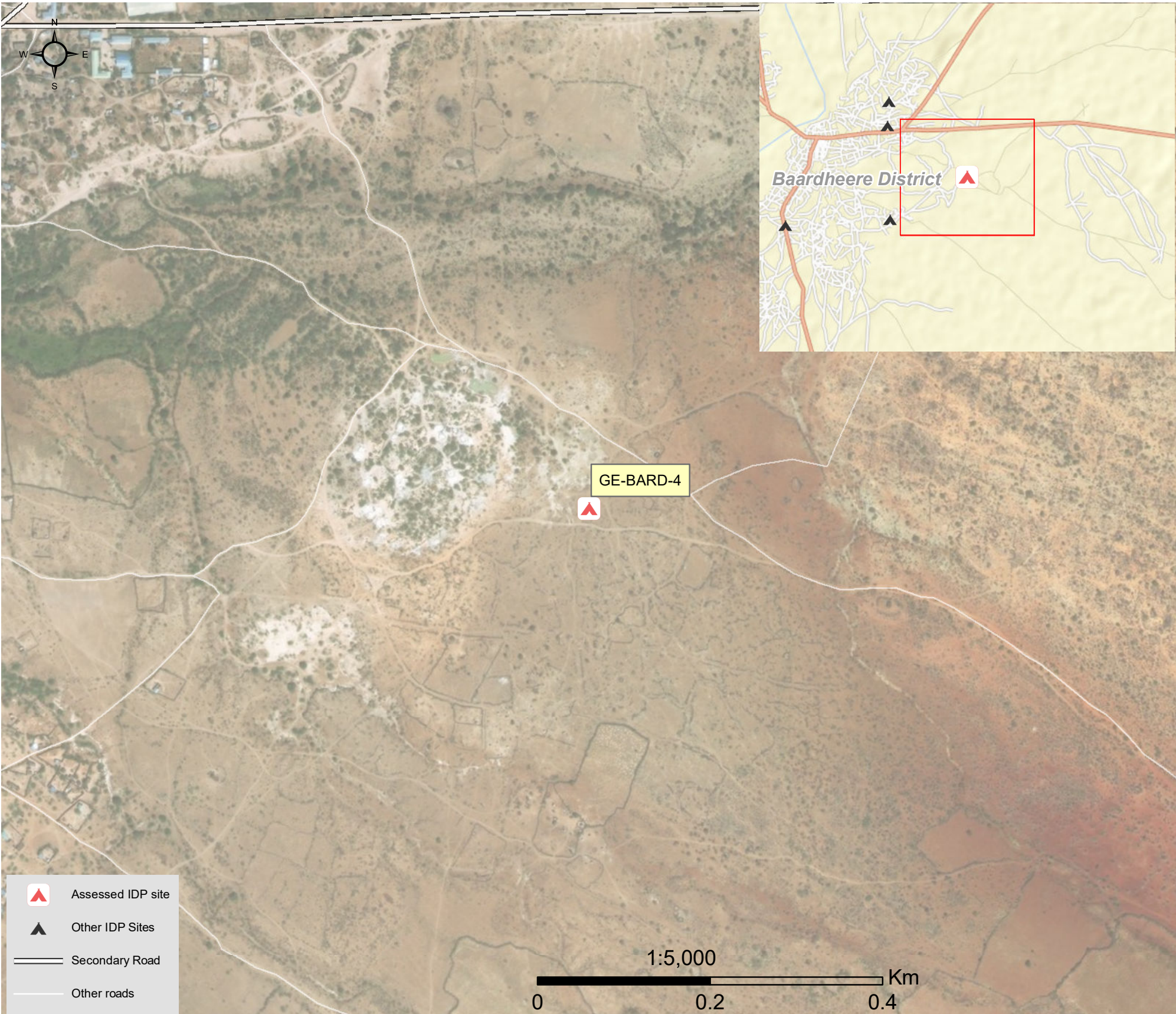
Date assessed: **Oct - 2017**

Location map



Assessed IDP sites in Baardheere

Coordinates: Lat. 2.334, Long. 42.297



1.United Nations High Commissioner for Refugees (UNHCR): Protection & Return Monitoring Network (PRMN), September 2017

2.For each target location, the area was divided into 1km² grids. Enumerator teams then visited each grid to verify whether an IDP site was present. By visiting all grids, teams were able to determine the total number of sites in each location.

3.Where KI responses were significantly divergent, these were verified with the respective KIs with a higher reliability accorded to the response provided by the site manager or community leader.



Site Information

Settlement type	Spontaneous site
Estimated number of individuals	3,000
Estimated number of households	500
Site capacity reached	Yes
Responsible management agency	Residents
Date when most site residents arrived	Apr-17
Site owner	None



Protection

Number of vulnerable households:

Female-headed households	21
Child-headed households	5
Elderly individuals ⁴	607
Unaccompanied children	25
Individuals with a physical disability	22

Presence of shared community space	No
Presence of separate space for women/girls	No
Presence of child friendly space	No
Public lighting in the site	No
Type of landownership	N/A
Risk of eviction in next three months	No



WASH

Access to potable water	Yes
Number of latrines in the site:	
Latrines (mixed)	35
Latrines (male)	0
Latrines (female)	0
Access to handwashing facilities	No



Shelter and Non-Food Items (NFI)

Most common shelter types in the site⁵:

1. Buul
2. Tent
3. CGI

Electricity available in the site	No
Access to a NFI market	Yes
Average walking time to the nearest NFI market	30 minutes
Perceived safe access to NFI market	Yes



Displacement

Estimated number of households per displacement group:

IDPs	478
Host community/ non-displaced	22
IDP households arrived in the past 3 months	220

Most common areas of origin:

First area of origin	Bay
Second area of origin	Lower Juba
Third area of origin	Middle Juba



Food Security

Primary source of food	Market purchase
Food distributions	None
Access to a food market	Yes



Health and Nutrition

Most common health issue(s) reported in the site:

1. Polio
2. Diphteria
3. N/A

Access to healthcare services	No
Average walking time to the nearest health service	N/A
Women give birth in the site	Yes
Access to nutrition services	No
Average walking time to the nearest nutrition service	N/A

Access to nutrition services: No



Education

Education services available	No
Average walking time to the nearest school	N/A

Education facilities available to residents in the site⁵:

1. N/A
2. N/A
3. N/A



Communication

Three most trusted sources of information⁵:

1. Friends, neighbours and family
2. N/A
3. N/A

Most commonly spoken language	Somali Standard
-------------------------------	-----------------

4.More than 60 years old.

5.Key informants could select multiple responses.